

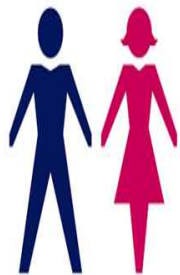
# Hampshire Domestic Abuse Strategy 2017-2022

We aim to lead a co-ordinated effort to both prevent and reduce incidences of domestic abuse.

It is recognised that domestic abuse affects men, women, children and communities across Hampshire.

Everyone can contribute to, not just raising awareness of the effects that domestic abuse has, but also challenging those who tolerate abuse and helping protect those affected by it.





Both men and women may perpetrate or experience domestic violence and abuse. However, it is more commonly inflicted on women by men



Being female, aged between 16 and 24



The risk is further increased around the time of separation if the woman decides to leave the relationship



The risk is also increased if a woman is pregnant or has recently given birth.



Long term conditions

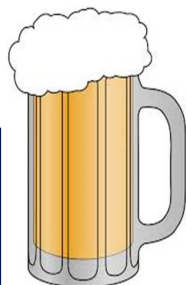
Someone with a long-term illness or disability or a mental health problem. .



For transgender people, around 80% will experience emotional, physical or sexual abuse from a partner or ex-partner.



Hampshire  
County Council



The role played by alcohol or drug misuse

[www.hants.gov.uk](http://www.hants.gov.uk)

# Key Messages for Hampshire

In Hampshire an estimated 44,675 females and 25,673 males experience domestic abuse a year.

Approximately half of all the domestic abuse incidents attended by the police are recorded as an offence.

One in four domestic abuse offences attended by the police were assessed as high risk and referred to MARAC (Multi-Agency Risk Assessment Conference)

The majority of domestic abuse victims and perpetrators were aged 20 and 44 years.

Compared to national data and the most similar force group, Hampshire Police Force has a higher percentage of male victims.

Rushmoor & Hart had the highest proportion of BME, LGBT and disabled victims referred to MARAC compared to the other Hampshire areas (2015/16 data).

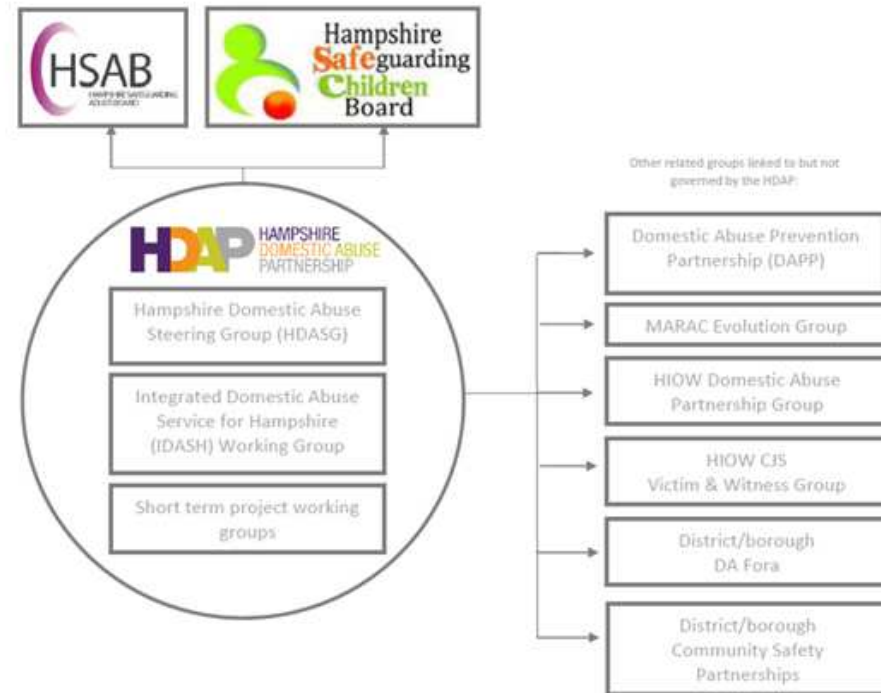
# The impacts

- 1 in 5 high-risk victims reported attending A&E as a result of their injuries in the year before getting effective help
- Domestic abuse often leaves victims with reproductive consequences
- At least a fifth (18%) of children in domestic abuse households are injured as a result of the abuse
- Children exposed to domestic violence are more likely to have behavioural and emotional problems
- 40% of high-risk victims report having mental health issues
- 16% of victims report that they have considered or attempted suicide as a result of the abuse, and 13% report self-harming
- Between 30 and 60% of psychiatric in-patients had experienced severe domestic abuse
- Long term as adults,
  - children who have witnessed violence and abuse are more likely to become involved in a violent and abusive relationship themselves.
  - Children from violent and abusive families may grow up feeling anxious and depressed, and find it difficult to get on with other people.



# Domestic Abuse Strategic Partnership

- 5 Clinical Commissioning Groups (CCGs)
- Community Safety Partnerships – representation behalf of all the districts and boroughs
- Community Rehabilitation Company (CRC)
- Contracted Service Provider representation – IDASH, DAPP
- Crown Prosecution Service
- Hampshire Constabulary
- HCC – Adults’ Health & Care
- HCC – Children’s Services
- HCC – Public Health
- HCC– Supporting Troubled Families Programme
- Hampshire Safeguarding Adults’ Board – HSAB
- Hampshire Safeguarding Children’s Board - HSC
- Housing
- Police and Crime Commissioner (PCC)
- National Probation Service
- Victim Support
- Unitary authorities



# Success

- Joint Targeted Area Inspection
- Development of co-ordinated service for Victims (IDASH) and complex needs victims
- Domestic Abuse Prevention Partnership (DAPP)
- CARA
- Invisible Walls Project
- Innovation Grant from the DFE / Family Intervention Teams
- Supporting Troubled Families Programme (STFP)
- Target Hardening



# Hampshire Domestic Abuse Strategy (2017-22)

1. Promoting healthy relationships and preventing domestic abuse from starting;
2. Ensuring victims are protected and supported;
3. Reducing the impact of abuse on children, families and communities; and
4. Reducing those who perpetrate abuse and reduce unhealthy behaviour.



# Key Outcomes

## Promoting healthy relationships and preventing domestic abuse from starting

- Increased knowledge of abuse in population.
- Increased common understanding and identification of risk in key agencies.

## Ensuring victims are protected and supported

- Identify appropriate level of support at the right level of service, based on the DASH risk assessment tool and personal needs.

## Reducing the impact of abuse on children, families and communities

- More children supported to remain safely at home
- Fewer children on child protection plans and coming in to care

## Reducing those who perpetrate abuse and reduce unhealthy behaviour.

- Reduction of repeat abuse in those perpetrating abuse
- Increased common understanding and identification of risk
- Reduction in the risk of learned abusive behaviours





# Challenges

- Strategy to action – maintaining engagement with all partners
- Complex problems need joined up solutions
- Secure stability of some aspects of provision due to short term funding
- Taking learning from Domestic Homicide Reviews
- Effective risk assessment by all partners agencies



# Transformation and innovation



# Hampshire Domestic Abuse Strategy 2017-2022

Everyone can contribute to, not just raising awareness of the effects that domestic abuse has, but also challenging those who tolerate abuse and helping protect those affected by it.

Working together to deliver interventions and recognising the consequences